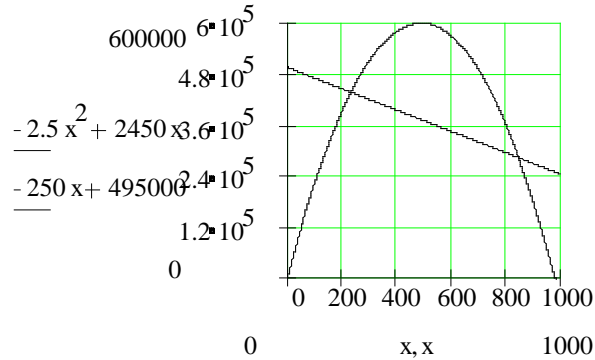


12.2 Solving Nonlinear Equations by Graphing

- 3) a) $[0, 234]$ $[846, 980]$
 b)



- 5) a) $\{x : x < 46 \text{ or } x > 56\}$
 b) $[0, 46)$ $(56, 100]$

- 7) Solution set: $\{x : 0 \leq x \leq 4\}$

- 9) a) $\{x : -4 < x < -4\}$
 b) $\{x : -4 \leq x < \dots\}$

- 11) $\{x : x < -3.4 \text{ or } x > 7.4\}$ (approximately)
 $(-\infty, -3.4) \cup (7.4, \infty)$ (approximately)

- 13) $\{x : x < -\sqrt{5} \text{ or } x > \sqrt{5}\}$
 $(-\infty, -\sqrt{5}) \cup (\sqrt{5}, \infty)$

- 15) $\{x : x < -2 \text{ or } x > 2\}$
 $(-\infty, -2) \cup (2, \infty)$

- 17) a) $9x^2 - 6x + 2$
 b) 50

- 19) $x = 25$