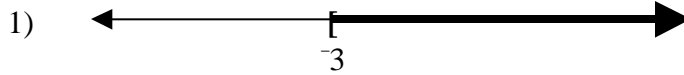


Review Exercises (Ch. 12)



3) $(-\infty, -2] \cup (5, \infty)$

5) The set of temperatures T that is best for business is $\{T : T < 32^\circ\text{F} \text{ or } T > 75^\circ\text{F}\}$.

7)

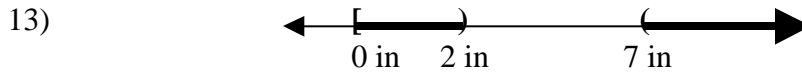
a) $125 - 5x \geq 50$
 $125 - 5x \leq 100$

b) The cover charge should be no more than \$15 and no less than \$5.



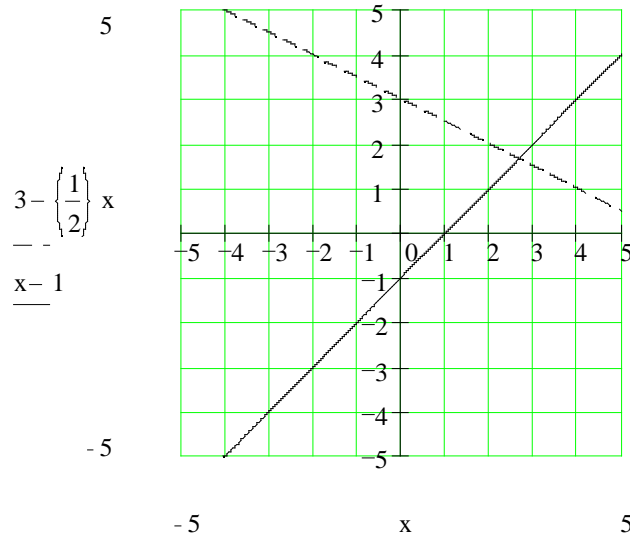
9) $A \Leftrightarrow 3, B \Leftrightarrow 1, C \Leftrightarrow 2$

11) Solution set: $(0.43, 5.82)$ (boundary points are approximate)

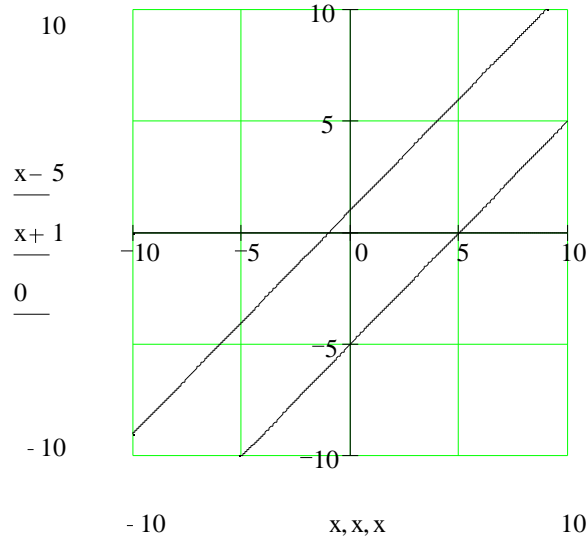


15) Only A and C are solutions.

17)



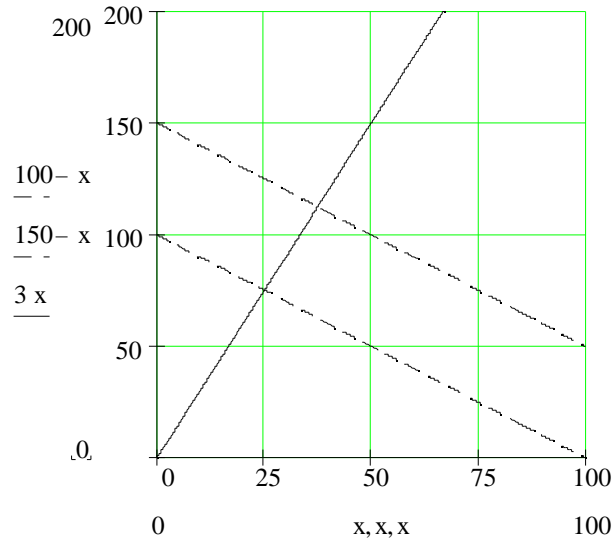
19)



21)

a) $100 < x + y < 150$
 $y \geq 3x$

b)

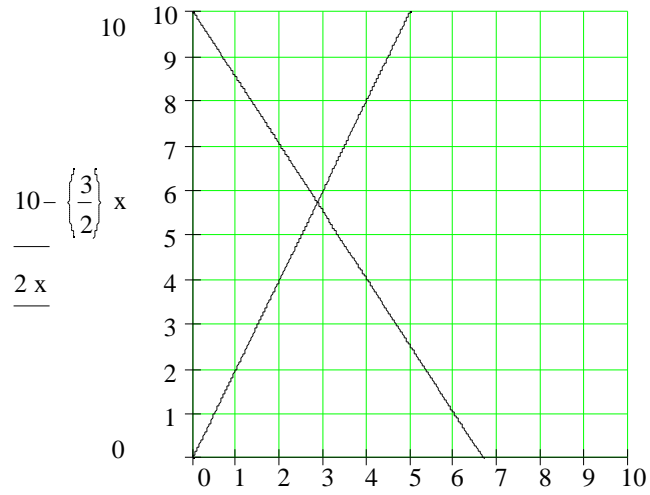


c) Answers will vary

23)

- a) $30x + 20y \leq 200$
 b) $y \geq 2x$
 c) You can't buy a negative number of shirts or pants.

d)



e) Answers will vary.